

DATA SHEET V610F

SPRING MOUNT

CMS10 RANGE

OPEN COIL

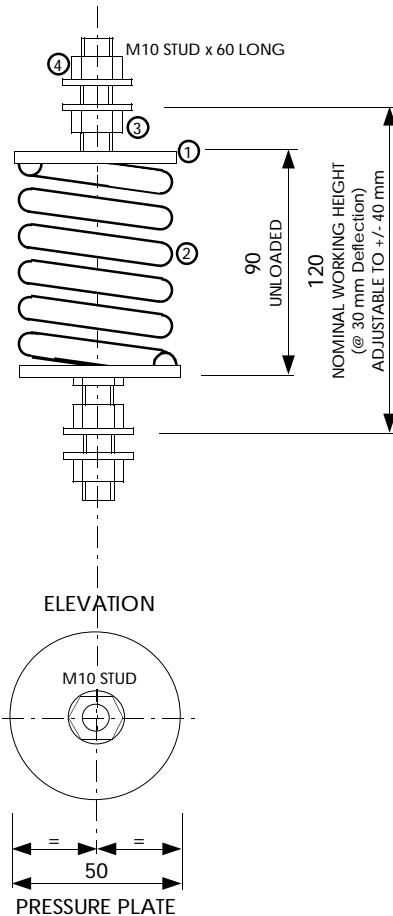
THIS IS NOT A STAND ALONE DOCUMENT AND UNLESS REFERRED TO IN A CERTIFIED EQUIPMENT SCHEDULE IS SUBJECT TO REVISION WITHOUT NOTICE.

CAPACITY

TYPE	COLOUR CODE	LOAD * Kg	DEFLECTION * mm
11	BROWN	74	54
12	GREEN	102	51
13	WHITE	131	43
14	BLUE	175	41
15	ORANGE	234	39
16	PURPLE	331	35

*IMPORTANT : VALUES SHOWN ARE MAXIMUM WITH SPRING IN SOLID CONDITION. RECOMMENDED OVERLOAD CAPACITY IS 50%.

DIMENSIONS



COMPONENTS

1. SPRING PRESSURE PLATE.
2. COLOUR CODED HIGH DEFLECTION STEEL SPRING .
3. ADJUSTING NUT. INSTALLERS TO LUBRICATE WITH FREEING OIL (WD40).
4. LOCKING NUT.

FINISH

PASSIVATED ZINC PLATING TO METAL COMPONENTS.

POLYESTER COATING TO SPRING (COLOUR CODED).

SUITABLE FOR USE IN NON-CORROSIVE EXTERNAL APPLICATIONS.

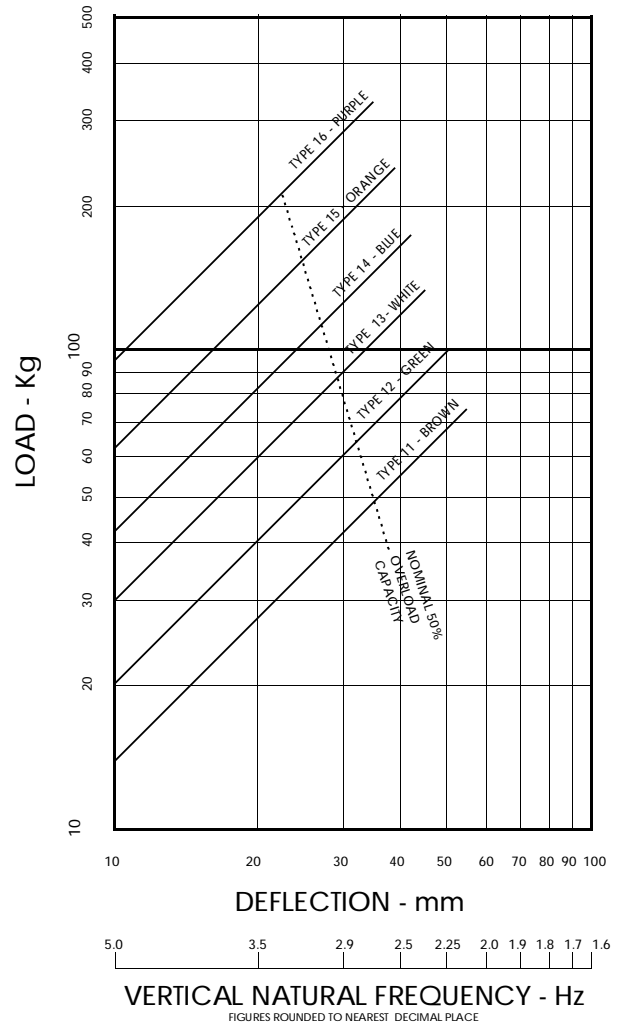
FEATURES

- OPEN COIL
- FULLY CAPTIVE
- HIGH LOAD CAPACITY
- HIGH DEFLECTION
- ALL STEEL CONSTRUCTION
- HIGH FREQUENCY ISOLATION
- ZINC PLATED COMPONENTS
- POWDER COATED SPRING
- COLOUR CODED



ALLAWAY
ACOUSTICS
LIMITED
www.allawayacoustics.co.uk

LOAD/DEFLECTION GRAPH



NOTES

THIS DATA SHEET IS TO BE READ IN CONJUNCTION WITH THE EQUIPMENT SCHEDULE.

THE SPRING WILL NEED ADJUSTING AFTER INSTALLATION.

SUITABLE FOR USE IN NON-CORROSIVE EXTERNAL APPLICATIONS.

SUFFIX

CM(-) - OPEN COIL SPRING MOUNT.

SP - SPECIAL CONSTRUCTION. SEE EQUIPMENT SCHEDULE FOR DETAILS.